

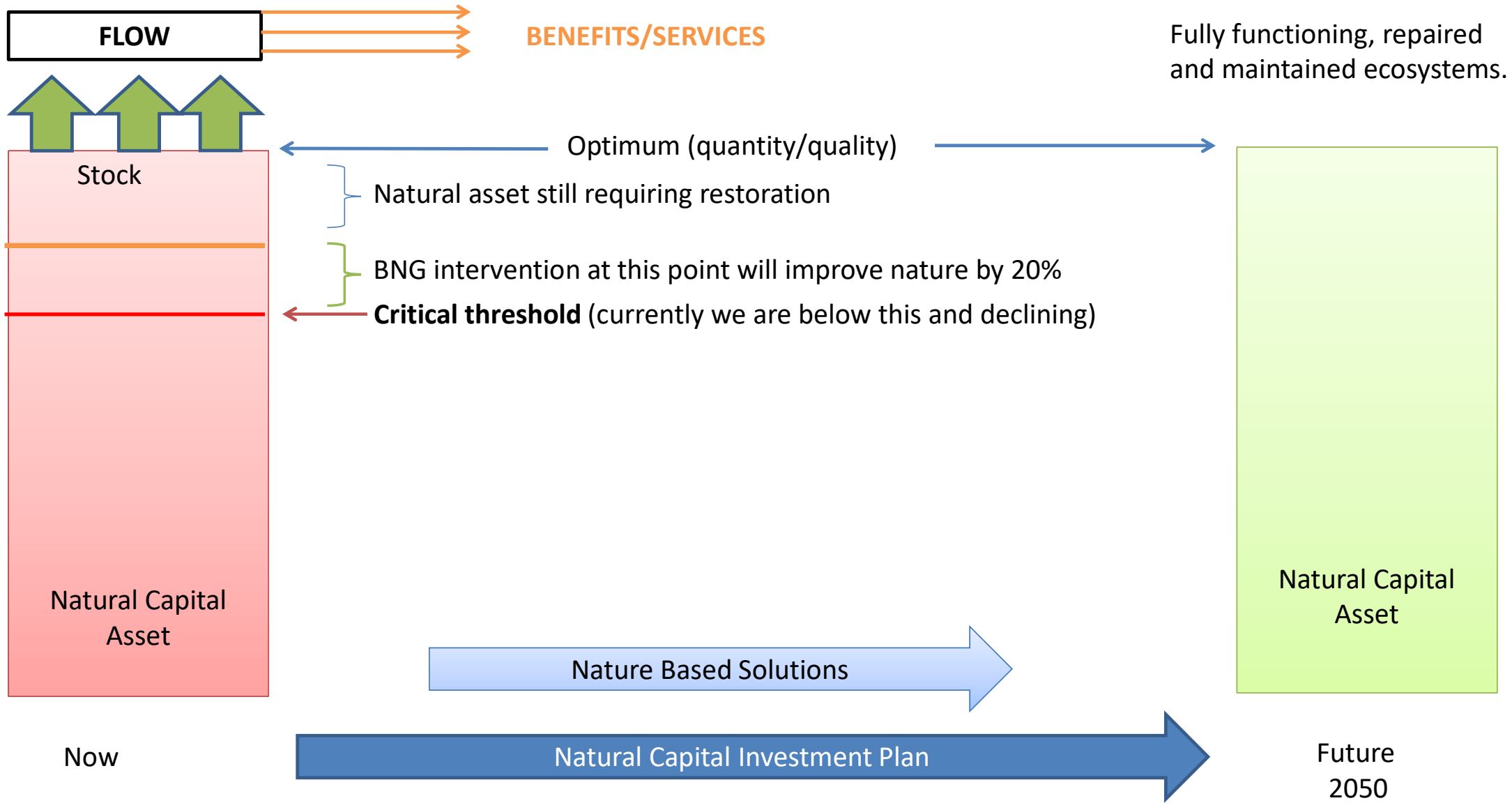


Surrey Wildlife Trust

Natural Capital Investment Company – sealing the deal

Sarah Jane Chimbwandira





Surrey's Natural Capital Approach



Sustainable management of natural capital assets; value, amount, use and Return On Investment(financial & non-financial)



Nature based solutions to 4 crises:
Ecological, People, Climate & Economic



Progress to date



Surrey's Natural Capital Approach (2012)

- Nat Cap Asset Register - woodlands
- Biodiversity Offsetting scope

Natural Capital Investment Strategy (2015)

- Sustainable land mgmt
- Smart economic growth
- Health & wellbeing

Natural Capital Investment Plan (2018)

- £20M investment fund
- **Transformative approach – NCIC**
- Multi-capital approach

Surrey's Nat Cap Approach (implementation) (2019 – date)

- Naturally richer Coast to Capital (C2C)
- NEIRF1
- NEIRF2
- C2C Project 2

UK Nature

- Opportunities

Surrey's Nature Recovery Network

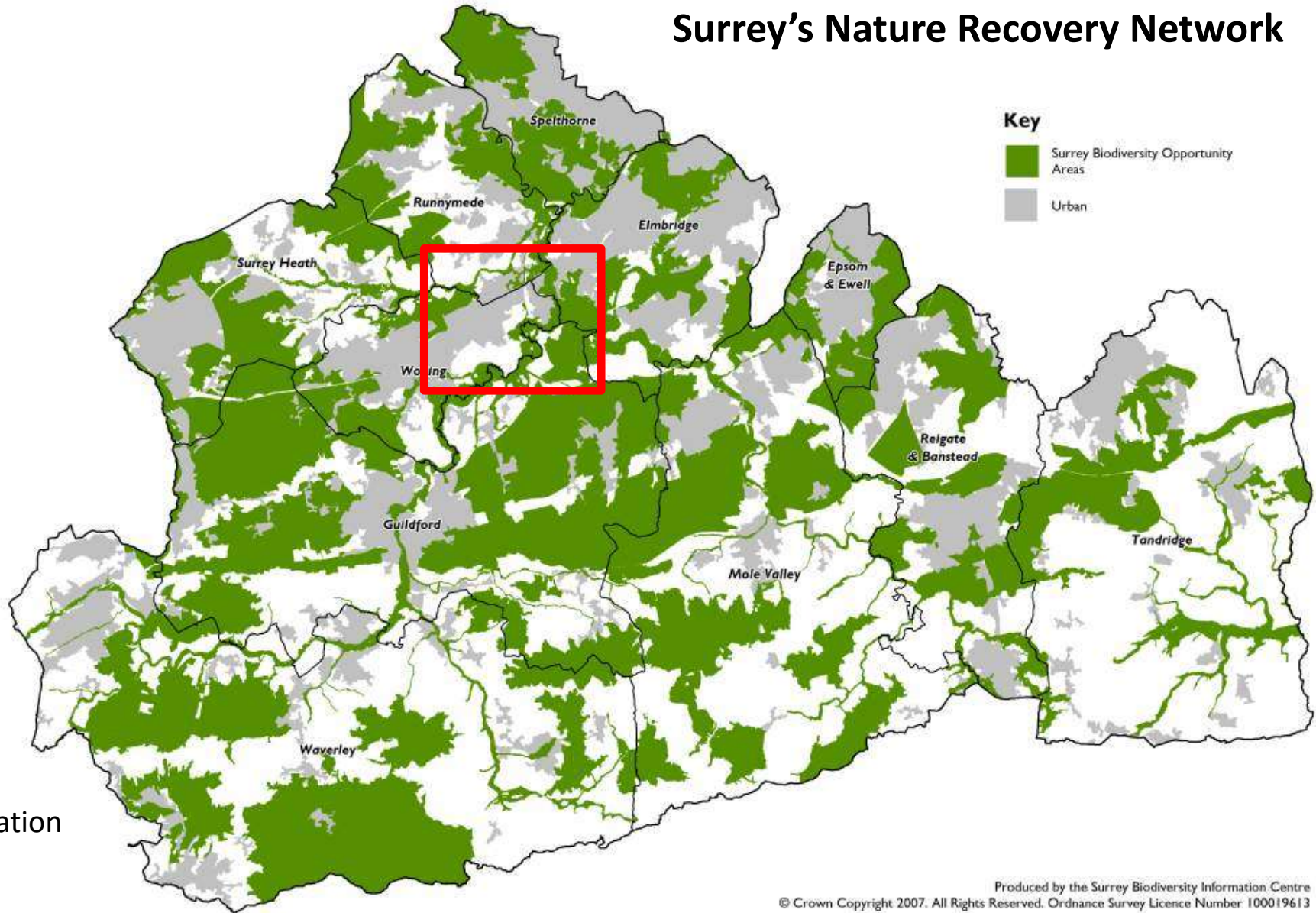
Based on Lawton's Principles of 'more, bigger, better & more joined up'

Covers 39% of Surrey

Well established with Surrey LPAs

Urban Opportunities

There are now also 15 Urban BOAs to guide the implementation of green and blue infrastructure (work completed by SWT in behalf of SCC)



 Manor Farm location



Surrey
Wildlife Trust

Manor Farm field layout –
for this sale only credits in
fields 3,4 & 6 included.

Restoration primarily
improved grassland to
lowland meadow

finance  earth



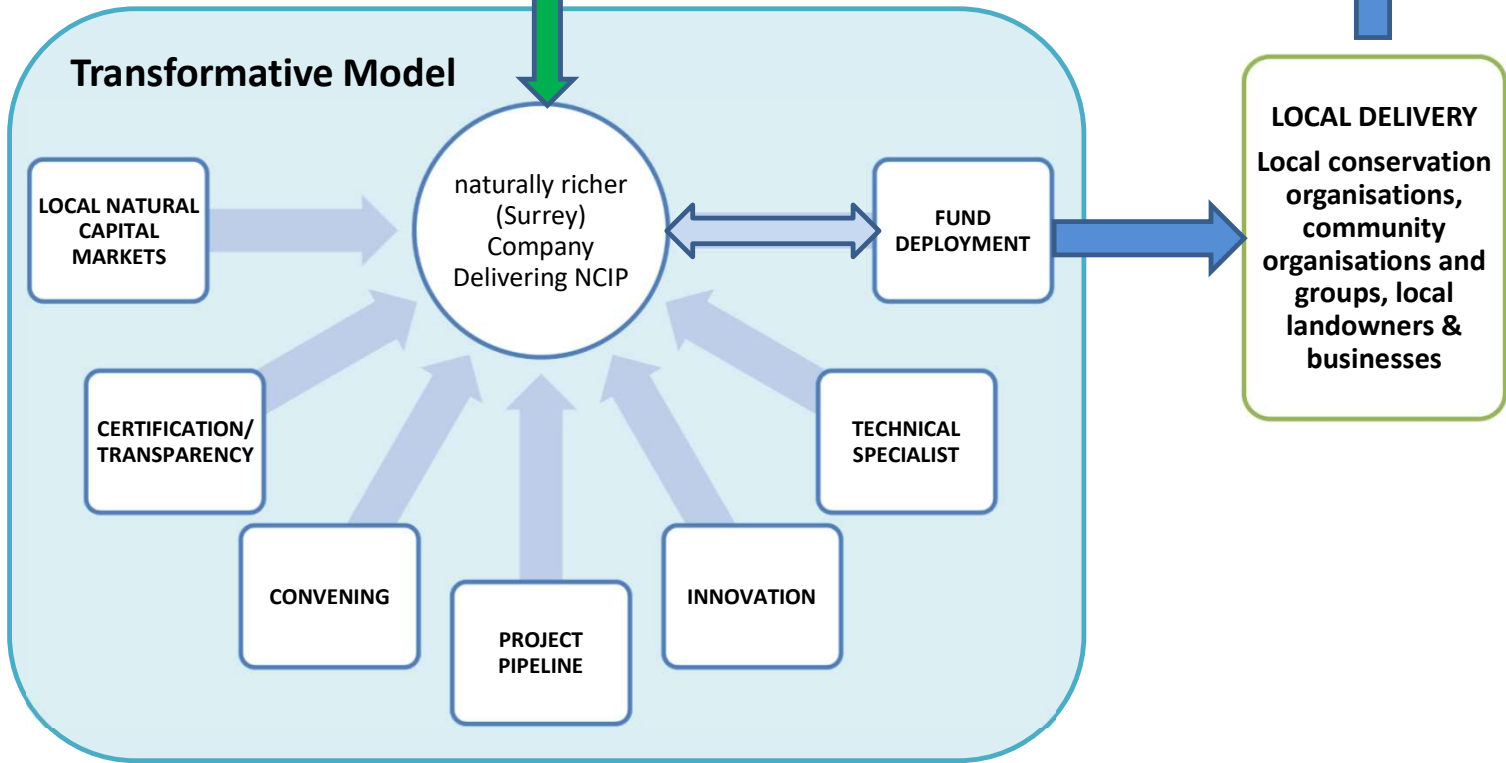
Natural Capital Investment Company



Delivery of 25 Year Environment Plan
Partnership, Advocacy, Statutory Planning, Working Groups (Health, Local Wildlife Sites, Biodiversity)



Delivery of Sustainable Development Goals



SWT as the Natural Capital Investment Company for Surrey



NBS team focus on working with landowners, NEIRF2 delivery of NCP with **SWT ES**
 Current focus on developing BNG opportunities
1st sale of BNG credits £1M

SWT collaborative approach & partner engagement through NBS, Team Wilder, CaBA

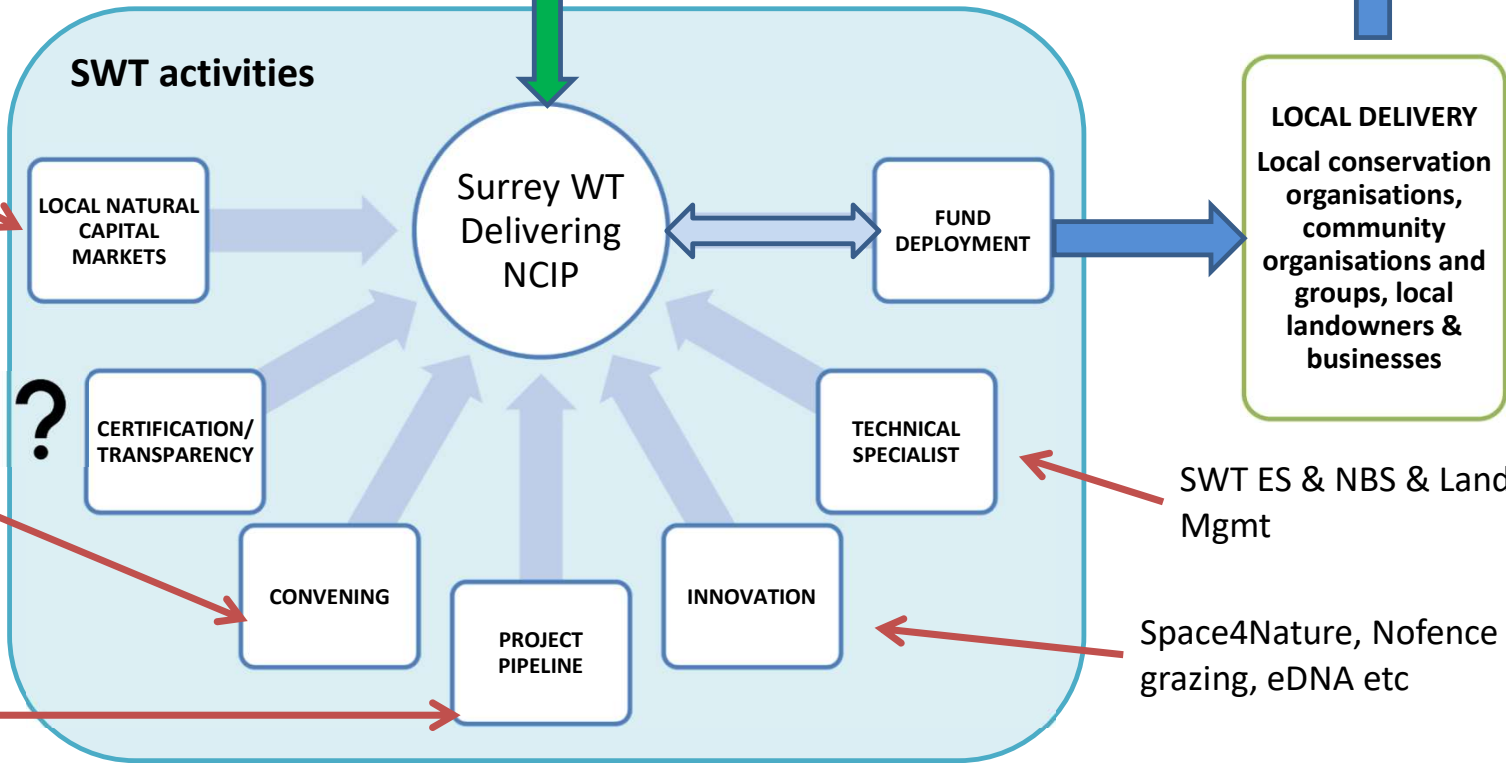
SWT project process – extension to Surrey through SyNP?



Delivery of 25 Year Environment Plan
 Partnership, Advocacy, Statutory Planning, Working Groups (Health, Local Wildlife Sites, Biodiversity)

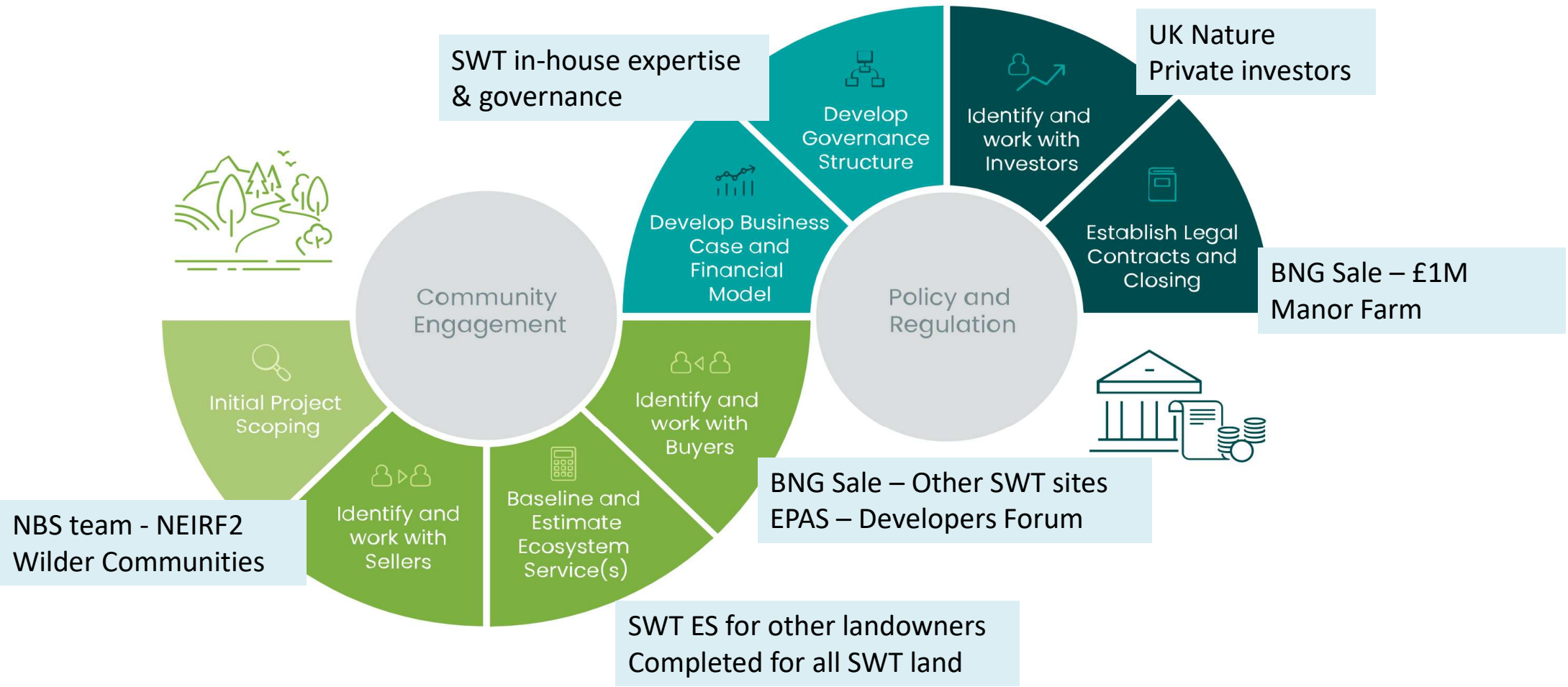


Delivery of Sustainable Development Goals



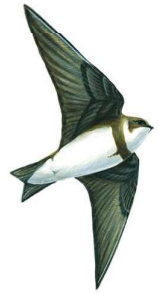
SWT ES & NBS & Land Mgmt

Space4Nature, Nofence grazing, eDNA etc



What next?

NATURAL ENVIRONMENT INVESTMENT READINESS FUND



NEIRF 1

- Sale of £900k BNG credits Dec 22, NCIC ~ SyWT
- Liaising with LPAs across Surrey; developing case studies & building capacity

NEIRF 2 - programme to prepare for blended finance opportunities & increase supply:

- Providing technical ecology & finance expertise to 6 landowners to prepare natural capital plans and facilitate entry to natural capital markets
- Further building a collaborative community of landowners & managers across Surrey who have done Baseline BNG assessments
- Accelerating the development of our project pipeline to increase investment opportunities
- Creating habitat banks which help deliver our Nature Recovery Network and beyond
- Preparing for UK Nature



Key considerations:

- ✓ Preparation – complete baseline surveys and assess availability of credits now to be fully informed when liaising with buyers. This helps target strategic required biodiversity outcomes
- ✓ Pricing – full cost recovery, inflation, contingency, surplus, market price, brand value, case by case
- ✓ Ethical considerations – we assess buyers in respect of our Ethical Policy, pricing and minimum 20% BNG position
- ✓ Technical capacity/capability – ecological, financial inc. investment, legal, land management
- ✓ Time involved in completing a deal – Manor Farm took just under a year to complete
- ✓ Turning theory into practice is key!

